

geodyna® 980L and 4800L

Truck wheel balancers



Options:

- Pneumatic loading device
- Centring stars
- Truck wheel cones

Off-the-truck wheel balancers



Different to on-the-truck wheel balancers the off-the-truck wheel balancers measure both the static and the dynamic portions of unbalance and consequently increase truck wheel life considerably.

Premium features of geodyna 980L:

The distance rim/machine and rim diameter are entered semi-automatically. This is particularly necessary when balancing light-alloy wheels where two adhesive weights have to be placed inside the rim. As a result balancing of light-alloy rims is as easy as balancing of steel rims.



The gauge arm is provided with a patented wheel weight clamp which keeps the wheel weight in the correct position during weight placement.

The electronic friction brake firmly holds the wheel in every position, meaning there is no need for a pedal-operated brake.

The split weight mode allows easy positioning of adhesive weights on light-alloy rims (both on truck and car wheels) in a hidden position.

The cone adaptor is provided with a spacer and a cone for balancing of light-truck wheels. Truck wheels can be clamped and balanced using either of two optional clamping kits.

The patented measuring system features virtual plane measurement technology (VPM) which ensures the most accurate results.

Patented optimisation



Off-the-truck wheel balancers

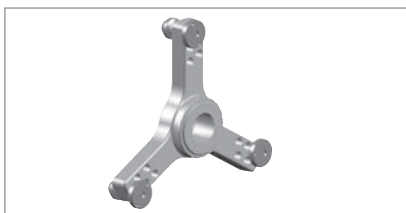


Additional features of geodyna 4800L:

- 17" VGA monitor
- Extensive help texts in more than 20 languages
- asanetwork capability



Accessories



3-arm star

(ref. no. 30380)

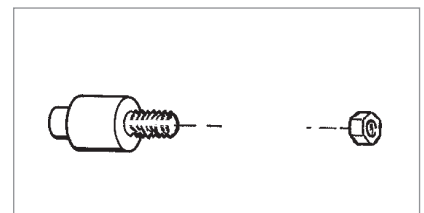
For truck / light-truck wheels with pitch circle diameters of 170 / 184,15 / 205 / 222,25 / 245 mm



Pre-centring ring for light-truck wheels

(ref. no. 30616)

For rims of 17.5" and 19.5" diameter and centre hole of 202 mm. To be used in conjunction with the 3-arm star.



1 off truck bolt for Alcoa rims

(ref. no. 30381)

Indispensable accessories



Standard clamping kit with 2 truck cones (198 – 225 mm / 270 – 286.5 mm)

(ref. no. 4028713)



Professional clamping kit for stud-hole location of wheels with 4-arm / 5-arm star and 5 bolts

(ref. no. 4028764)



Pneumatic loading device

(ref. no. 4028401)

Technical Data	
	980L and 4800L
Power supply (V)	230 Volts, single phase / 50 / 60 Hz
Diameter range of centring cone (mm)	Light truck cone: 120 mm – 174 mm
Diameter of shaft (mm)	40
Measuring speed (rpm)	98
Accuracy (g)	1
Rim width (dynamic balancing) (inch)	3 – 20
Rim diameter (inch)	8 – 30
Max. wheel width (mm)	650
Max. wheel diameter (mm)	1300
Max. wheel weight (kg)	250
Data entry of DISTANCE	Semiautomatic via gauge arm
Data entry of DIAMETER	Semiautomatic via gauge arm
Data entry of WIDTH	Manual
Dimensions (mm) H x W x D with wheel hood open	1860 x 1350 x 1120
Weight of machine incl. cone adaptor	980L 255 4800L 270

Snap-on® Equipment

France

Snap-on Equipment France
Za du Vert Galant · 15, rue de la Guivernone BP7175 · 95310 Saint-Ouen-L'Aumône
Tel: +33 (0) 134/48 58-78 · Fax: +33 (0) 134/48 58-70 · www.snapon-equipment.fr

Germany

Snap-on Equipment GmbH
Undercar
Werner-von-Siemens-Str. 2 · 64319 Pfungstadt
Tel: +49 (0) 6157/12-0 · Fax: +49 (0) 6157/12-286 · www.snapon-equipment.de

Italy

Snap-on Equipment s.r.l.
Via Prov. Carpi, 33 · 42015 Correggio (RE)
Tel: +39 0522/733-411 · Fax: +39 0522/733-410 · www.snapon-equipment.it

United Kingdom

Snap-on Equipment Ltd.
48 Sutton Park Avenue · Reading RG6 1AZ
Tel: +44 (0) 118/929-6811 · Fax: +44 (0) 118/966-4369 · www.hofmann.co.uk

Export – Europe, Africa, Middle East, Australia, NZ

Snap-on Equipment s.r.l.
Via Prov. Carpi, 33 · 42015 Correggio (RE)
Tel: +39 0522/733-483 · Fax: +39 0522/733-479 · www.hofmann-ge.com